

# Y6 SATs

Help Code : 045

# Line Graphs BOOSTER

2011A KS2 Q19



500 children started a 20 kilometre sponsored cycle ride.

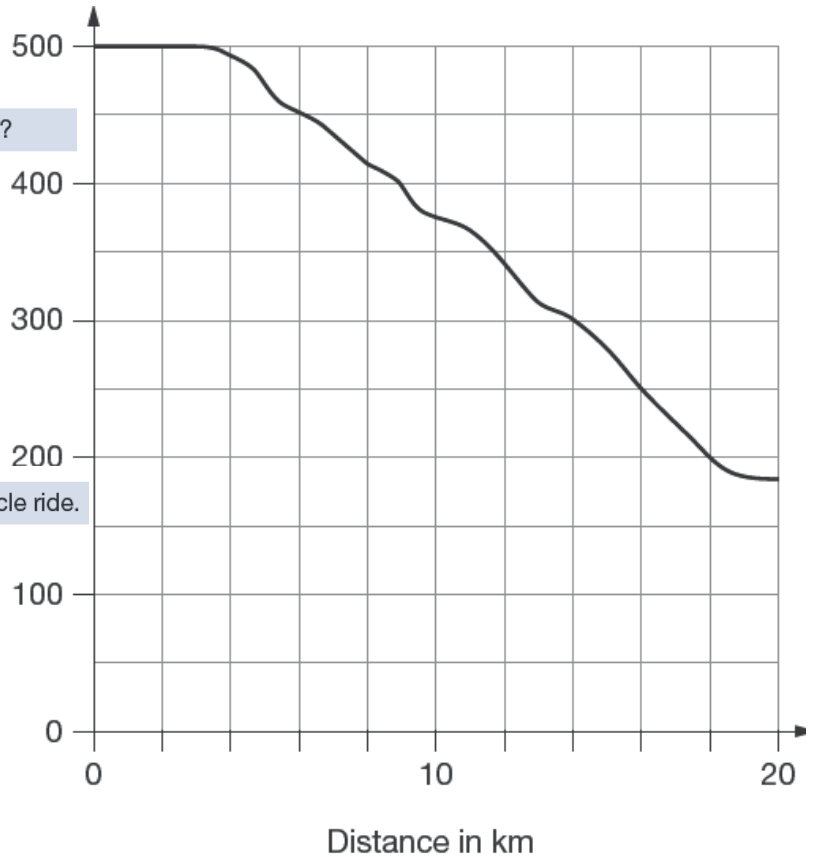
This graph shows how far they cycled.

At what distance were exactly half of the children still cycling?

km

Estimate how many children completed the 20 kilometre cycle ride.

Number of children cycling

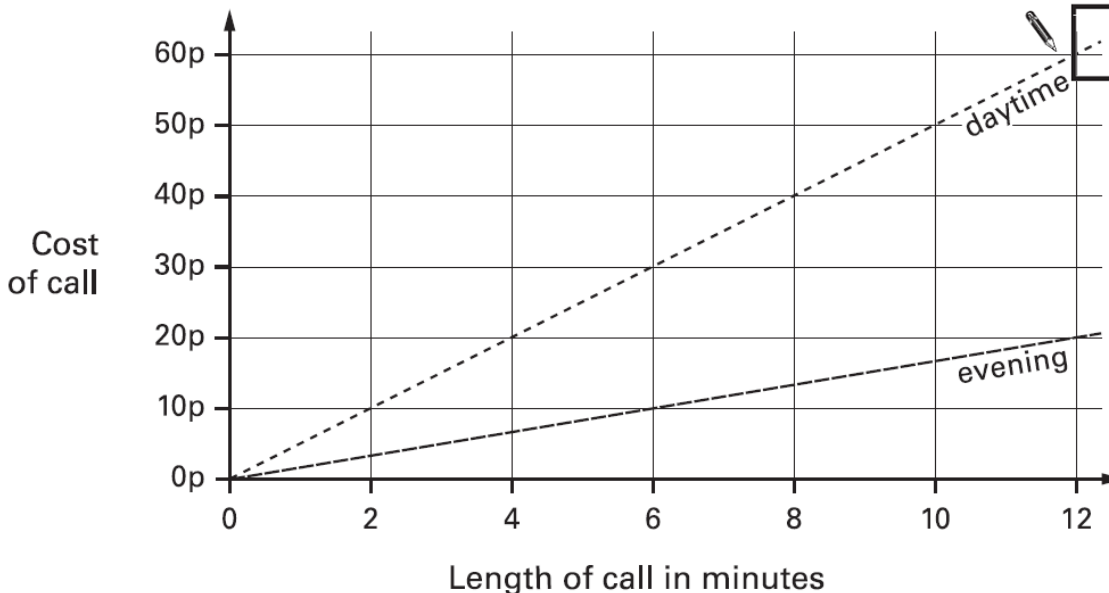


2002A KS2 Q10



This graph shows the cost of phone calls in the daytime and in the evening.

How much does it cost to make a 9 minute call in the daytime?



How much more does it cost to make a 6 minute call in the daytime than in the evening?

p

