

# Meet the teacher September 2025

## Year 2

# Who is Who?

- **Mrs McCue** – Class Teacher  
(Tuesday – Friday)
- **Miss Wilding** – Class Teacher  
(Monday and Thursday AM)
- **Mrs Stenning** – Teaching & learning assistant  
(Monday)
- **Mrs Dobson** – Teaching & learning assistant  
(Tuesday and Wednesday)
- **Mr Montague** - Music Teacher
- **Mrs Taylor** – French Teacher



# Start of the Day



- Children are expected to be in school between 8:45am and 8:55am.
- No cycling or scootering in the playground at this time.
- Year 2 need to enter the building via the main entrance.
- Parents/carers should leave the playground once their child is in school.
- If you are late, please ensure your child comes into school via the Main Office. They will be signed into the late book.
- If your child is absent, please contact the school and inform us. An indication of your child's symptoms would be beneficial so that we can support you and your child.



# End of the Day



- Children should be collected at 3:15pm from the Main School Entrance.
- Please arrive and exit the playground promptly through the main school gate.
- If for any reason you are late, please notify the Main Office. Late collections will be registered in the late book.
- Please inform us if your child is being collected by someone else by phoning the school office or via email.
- No cycling or scootering at these times.



**Sacred Heart**  
Catholic Primary School

# Uniform

- All school uniform and kit should be **clearly named**.
- Every **Tuesday** and **Wednesday**, pupils should come to school wearing their PE kit.
- Indoor PE kit: Sacred Heart maroon t-shirt, navy blue school shorts or skort, white socks and trainers.
- Outdoor PE kit: Sacred Heart tracksuit jumper and bottoms, white socks and trainers.
- Children should not be wearing jewellery.
- Hair tied back for school at all times.
- Ties are expected to be worn with winter uniform.
- Winter uniform after half-term until after the Easter holiday.



# Equipment

- Children should bring their Book bag, reading journal, reading book to school every day.
- Every child should have a named water bottle (and a packed lunch if they have one).
- Your child will need to bring in a coat as the weather becomes cooler.



**Sacred Heart**  
Catholic Primary School

# Daily Routine

Year 2 Autumn Timetable 2025

Time	Monday	Tuesday	Wednesday	Thursday	Friday
8:45 - 9:15	Prayers & Register Themed Assembly	Prayers & Register Mark 10 Mission	Prayers & Register	Prayers & Register	Prayers & Register
9:15 - 10:15	English	Maths	English	Science	Spelling Test
		9:45 - 10:15 Music			Maths
10:15 - 10:30	Break	Break	Break	Break	Break
10:30 - 11:50	Phonics	Phonics	Phonics	10:30-10:50 KS1 Hymn Practice	Phonics
	Maths	English	Maths	11:00-11:30: French Phonics	RE
11:50 - 12:50	Lunch	Lunch	Lunch	Lunch	Lunch
12:50 - 1.05	ERIC	ERIC/Reading Practice	ERIC/Reading Practice	ERIC/Reading Practice	ERIC/Reading Practice
1:05 - 2:00	Geography	RE	PE - Outdoor	English	Art/DT
2:00 - 2:10	Break	Break	Break	Break	Break DUTY
2:10 - 2:55	PSHE	PE - Indoor	Class Liturgy	Computing	Celebration assembly 2.25 - 3.05
2:55 - 3:15	Story	Story	Story	Story	Story



**Sacred Heart**  
Catholic Primary School

# Behaviour

Rewards	Consequences*
<ul style="list-style-type: none"><li>✓ Stickers</li><li>✓ Beanstalk</li><li>✓ Marbles</li><li>✓ Star of the Week</li><li>✓ Reader of the week</li><li>✓ Writer of the week</li><li>✓ Writer of the month</li><li>✓ Good Manners</li><li>✓ Headteacher Award</li></ul>	<ul style="list-style-type: none"><li>✗ Timeout</li><li>✗ Down the beanstalk</li><li>✗ Reflection activity (Restorative Approach)</li><li>✗ Discussion with another teacher</li><li>✗ Discussion with the headteacher\deputy headteacher</li></ul>

\* Please note that while in some instances the consequences escalate as written – this may not always be the case.

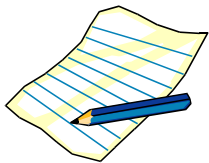


**Sacred Heart**  
Catholic Primary School



# Home Learning: English

- Home Learning: **Set on Friday and due back the following Tuesday.**
  - Maths
  - English
- Spellings: weekly list of words to learn.
- Reading:
  - To read aloud 10 minutes each day recorded in their Reading Journal.
  - Parents must sign the reading journal 5 times a week.



# Home Learning: Maths

- One piece of Maths Home Learning a week linked to class content.
- Some tasks may be computer-based using an online platform like Mathletics.



**Sacred Heart**  
Catholic Primary School

# Home Learning

- Weekly home learning tasks will focus on consolidation.
- Home learning will be set on a **Friday** and should be handed in by the following **Tuesday**.
- Children will receive a piece of English and Maths home learning every Friday.
- Children will receive a list of spellings to learn each week. The spelling lists will be stuck in your child's reading record book and the children will be expected to practice the spellings ready for their weekly spelling test.
- Children will receive a new reading book each Monday and are expected to read aloud for 10 minutes each day. Parents must sign the reading journal 5 times a week.
- The children may also get half termly home learning linked to RE, History or Geography and Science.



# Curriculum

- English:
  - Reading: fluency, prosody and comprehension skills.
  - Grammar, Spelling and Punctuation 'Non-negotiables'.
  - Phonics.
  - Class Text this term:  
The Storm Whale by Benji Davies  
The Lonely Beast by Chris Judge
- Mathematics:
  - White Rose curriculum – focus in the Autumn term is Place Value, Addition and Subtraction and Shape.
- Curriculum newsletter issued every term.
- A weekly email will be sent out every Friday:
  - Any changes to school routines and events will be communicated via email.



# Feedback Expectations

- Verbal feedback is a priority.
- Written feedback will be given as follows:
- Consistent use the codes detailed on our school marking policy.
- Children will have one focused mark in RE, Science and Learning Themes per topic.
- Children will receive Next Steps in Maths, once a week.
- Opportunities for Self and Peer Assessment will be introduced in activities that lend themselves to the process.



# Our Mission

*“Our mission is to create a harmonious community, where each one of us is a valued member who can ‘grow in love’, guided by the teaching of the Catholic Church.”*

# Our Vision

We work to fulfil the vision that each Sacred Heart pupil will:

- Demonstrate our school values and be active contributors at school, home and in the wider society.
- Value and develop their unique talents and gifts to reach their full academic and spiritual potential.
- Be effective communicators.
- Be aspirational for themselves and their peers.
- Develop their skills, knowledge and understanding to thrive as lifelong learners.

# Our Values

- Achievement
- Care
- Consideration
- Generosity
- Love
- Mutual Respect
- Patience
- Prayer
- Tolerance

Values work continues each year—delivered via assemblies, lessons, the way we operate in class and the way we respond daily to situations.



**Sacred Heart**  
Catholic Primary School



We work on these things at school not just the academic...

## Behaviour & Attitudes

- Attitudes to learning
- Behaviour
- Attendance and punctuality

## Personal Development

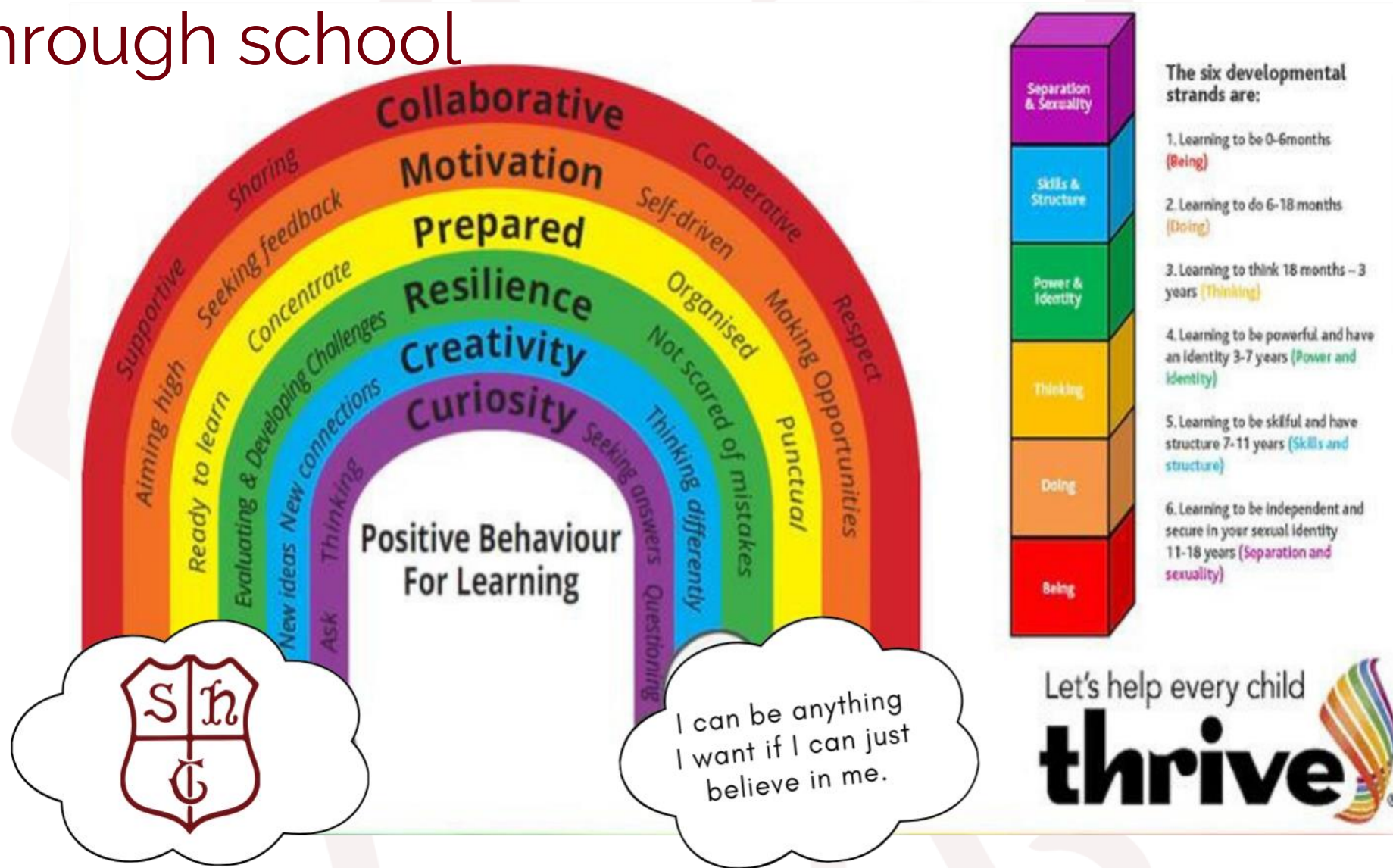
- Enrichment
- British, School and Gospel values
- Health and wellbeing
- Citizenship
- Equality and diversity
- Preparation for next steps – socially ready

## Quality of Education

- Curriculum design, coverage and appropriateness
- Curriculum delivery - expert teaching ensuring progress, knowledge and skill development for all
- Pupils ready for next stage of educational journey

Pupils' spiritual and emotional wellbeing is underpinned by our RE curriculum, Collective Worship and Catholic Social Teaching

# The Thrive Curriculum – continues all the way through school



There is a reason for every behaviour...

# The Zones of Regulation Curriculum – continues

## How can you help yourself?

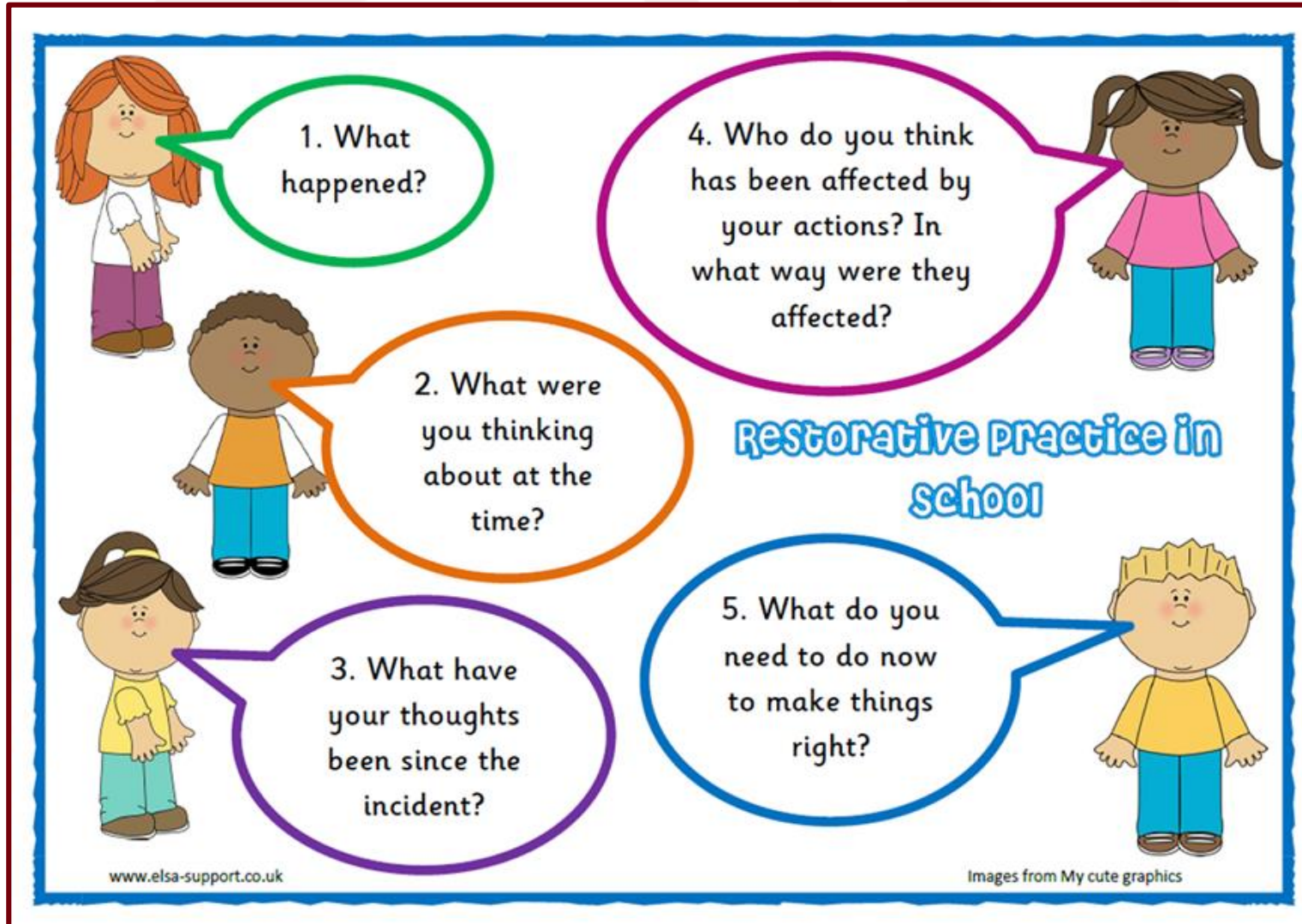
The BLUE zone	The GREEN zone	The YELLOW zone	The RED zone
			
How might you feel?	How might you feel?	How might you feel?	How might you feel?
sad tired bored moving slowly	happy okay focussed ready to learn	nervous confused silly not ready to learn	angry frustrated scared out of control
What might help you?	What might help you?	What might help you?	What might help you?
Talk to someone Stretch Take a brain break Stand Take a walk Close my eyes	The goal of this exercise is to get to the GREEN zone. What can you do to be happy, calm and ready to learn?	Talk to someone Count to 20 Take deep breaths Squeeze something Draw a picture Take a brain break	Stop what I'm doing Make sensible choices Take deep breaths Ask for a break Find a safe space Ask for help



**Sacred Heart**  
Catholic Primary School



# Restorative practice in school



Sacred Heart  
Catholic Primary School

# The importance of reading



*A love of reading is the best indicator of future academic success.*



**Sacred Heart**  
Catholic Primary School

# Why is reading crucial for young minds?

1. It improves vocabulary
2. Boosts self-esteem – read often - speak and write with confidence
3. Improved concentration and memory
4. Enhances creativity
5. Builds critical thinking skills

*Important: Please read with your child all the way through primary school.  
Continue to read aloud together even after they are a 'free reader' as this develops and maintains fluency.  
Reading is key to everything in a child's education.*



**Sacred Heart**  
Catholic Primary School

# Absence, Attendance and Punctuality

*Absence is only authorised in exceptional circumstances. Please read the new Attendance Policy as new government guidelines are now effective.*

**Regular school attendance is an essential important part of giving your child the best possible start in life.**

The school cannot authorise absences for holidays and all such requests will be unauthorised. In addition, any absence from school for holiday for longer than a period of 5 school days will be automatically referred to the Education Welfare Officer for follow up.

Please write to Mrs Green, Headteacher, if you require time off school at least two weeks in advance. A written response either email/letter will be sent back informing you of any decisions regarding the requests for absences.

## **Fines**

- Under new national rules, all schools are required to consider a fine when a child has missed 10 or more sessions (5 days) for unauthorised reasons. *Note these absences do not have to be consecutive.*

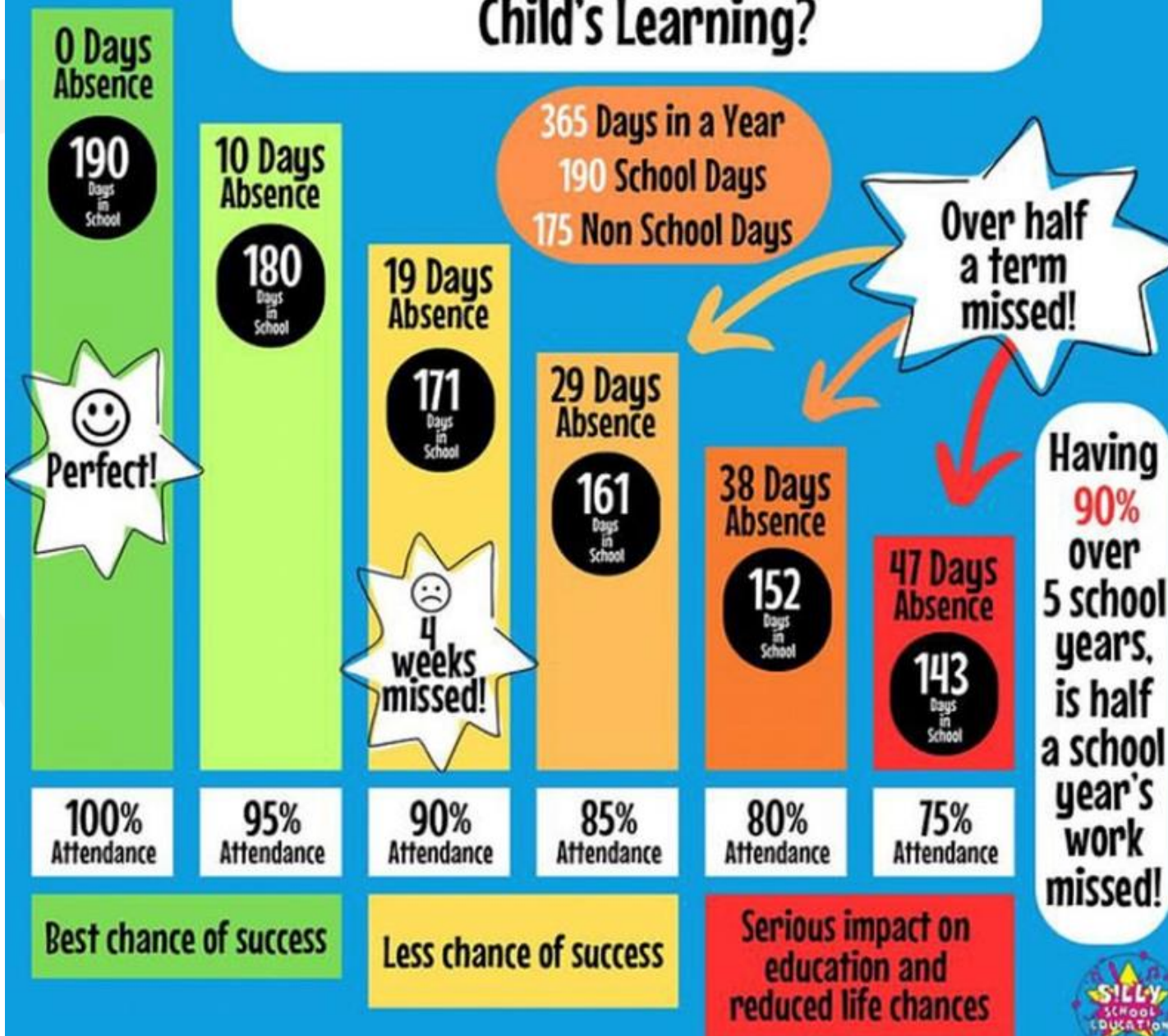
*The school expects attendance of at least 95%. Children already have 175 days of each year not in school.*

*They are expected to attend 190 unless they are sick or there are exceptional circumstances.*

**Punctuality** – children must arrive by **8.55 am**. Helping your child learn punctuality at an early age builds good habits for school and life. Being on time supports their learning, confidence and respect for others who are waiting on them.



# How Does School Attendance Affect a Child's Learning?





# HOW DOES YOUR ATTENDANCE IMPACT YOUR FUTURE?

Data released by the UK Department for Education shows that the lower your attendance the less likely you are to achieve in your GCSES.

**100%**

**82%**

Achieved 5 GCSES  
grade 5+

(inc. Maths & English)

**OVER 95%**

**77%**

Achieved 5 GCSES  
grade 5+

(inc. Maths & English)

**92-93%**

**53%**

Achieved 5 GCSES  
grade 5+

(inc. Maths & English)

**BELOW 90%**

**43%**

Achieved 5 GCSES  
grade 5+

(inc. Maths & English)

RESEARCH SHOWS THAT FOR EVERY 17 DAYS YOU MISS ACROSS YOUR SCHOOL CAREER, YOUR GCSE RESULTS GO DOWN BY 1 WHOLE GRADE!



ACHIEVING 5 OR  
MORE GCSES AT  
GRADE 5+ HAS  
SHOWN TO INCREASE  
YOUR LIFETIME  
EARNINGS BY **41%**

There are  
**365** DAYS  
in a year

**175**  
are not spent  
in school!

\*That gives you plenty of time for holidays, TV, shopping and video games!

# The importance of a good home and school partnership - for reference

Enhances the educational experience for the children and supports their overall development.

## Key advantages

1. **Enhanced Academic Performance:** Improved academic results through consistent educational support.
2. **Improved Behaviour and Attendance:** Better behaviour and attendance from early issue resolution.
3. **Stronger Parent-Teacher Relationships:** Mutual respect and understanding between parents and teachers.
4. **Personalised Learning:** Tailored teaching strategies based on a deeper understanding of each child.
5. **Increased Parental Engagement:** Greater parental involvement in school activities and decision-making.
6. **Better Social and Emotional Development:** Supportive environments for emotional and social well-being.
7. **Consistency in Values and Expectations:** Consistent messages about education, behaviour, and effort.
8. **Resource Sharing:** Exchange of resources and strategies to support learning.
9. **Enhanced Community Ties:** Stronger sense of community among families and the school.
10. **Early Identification of Issues:** Timely support for academic, social, or emotional challenges.



**Sacred Heart**  
Catholic Primary School

A message  
from the...

# Sacred Heart PTA

## What we do...

- Fundraise vital funds for our school
- Run Events, creating memories for the children and families.
- Bring the SH community together.



The first PTA meeting will be held:

TBA

Attending one of the above meetings will give you all the information you need to know + give you the opportunity to share your ideas and have your say.

## You are already a member of the Sacred Heart PTA!

No need to sign up, everyone with a child at our school is automatically a member. The PTA welcome anyone who has time, talents or skills to offer, or can help in any way with our fundraising activities.

We ask **EVERY FAMILY** to get involved in the PTA in some way, with the common goal of supporting and enriching our childrens primary school years.

## Ways you can support:

- Your Attendance (at events)
- Your Time
- Your Skills
- Your Ideas
- Your Contacts
- Your Financial Support

Any support, small or large, will be impactful & appreciated!

Any questions,

contact Becky Wilding - PTA Chairperson via your reps or at [Sacredheartpta@gmail.com](mailto:Sacredheartpta@gmail.com)

# Talk to Us!

Please do not hesitate to contact us:

- If you are worried about **any** aspect of your child's learning, well-being or experience at school.
- If you have questions or need clarification about school routines or home learning details we will try to respond to emails received within 48 hrs.

**[cmccue@sacredheart.richmond.sch.uk](mailto:cmccue@sacredheart.richmond.sch.uk)**

**[rwilding@sacredheart.richmond.sch.uk](mailto:rwilding@sacredheart.richmond.sch.uk)**

- If your concern is urgent, please notify the office.







**THANK YOU** for such a  
**positive start to the  
year!**

Your support and positivity means a  
lot to Sacred Heart.

**Any Questions?**